

# **MCRK**

---

**NCR Compatible**

**Motorized Card Reader / Writer**

---

**Installation Manual**

**DRAFT**

## **NOTICE**

**WHILE THE INFORMATION IN THIS PUBLICATION IS BELIEVED TO BE ACCURATE, ATM SERVICES MAKES NO WARRANTY OF ANY KIND, EXPRESS OR IMPLIED, WITH REGARD TO THIS MATERIAL INCLUDING, BUT NOT LIMITED TO ANY WARRANTY OF TITLE OR OWNERSHIP, IMPLIED WARRANTY OF MERCHANTABILITY OR WARRANTY OF FITNESS FOR PARTICULAR PURPOSE OR USE. In no event shall ATM Services be liable for errors contained herein or for indirect, incidental, special, consequential, reliance or cover damages, including loss of profits, revenue, data or use, incurred by any user or any third party.**

This document contains information which is protected by copyright. All Rights Reserved. No part of this work covered by copyright herein may be reproduced or used in any form or by any means - graphic, electronic, or mechanical, including photocopying, recording, taping, or information storage and retrieval systems - without permission of the copyright owner.

MCRK is registered trademark of ATM Services.

Other product names mentioned herein are used for identification purposes only and may be trademarks and/or registered trademarks of their respective companies.

It is the policy of ATM Services to improve products as new technology, components, software, and firmware become available. Therefore delivery, availability and specifications are subject to change without prior notice.

Change Sheet			
Title:MCRK Installation Manual			
Rev	Date	Section	Description of Change
A	05/06/08	All	Initial release

**Table of Contents**

1 Introduction..... 5

2 Replacing IMCRW with MCRK ..... 6

3 NCR 5670/5870/5873/5874/5875 Installation..... 6

    3.1 Removing old SDC MCRW..... 6

    3.2 Installing MCRK ..... 7

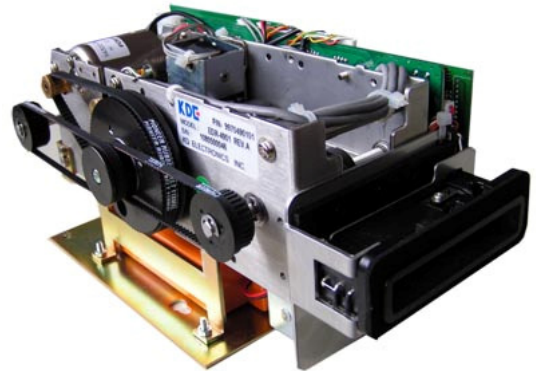
4 NCR 568x/588x Installation ..... 9

## 1 Introduction

MCRK Card Reader/Writer with Smart Card Interface is designed for installation into NCR 56xx and 58xx (PersonaS) ATMs.

MCRK Card Reader is a plug-in replacement of original NCR MCRW and IMCRW card readers:

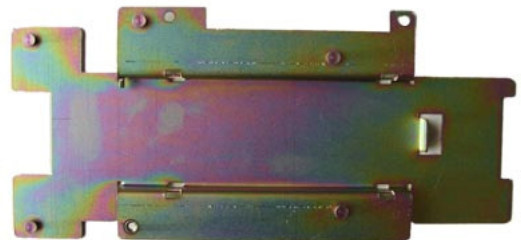
- Mechanical compatibility
- Electrical compatibility
- Programming interface compatibility



This document describes how to install and configure MCRK Card Reader into NCR 56xx and 58xx ATMs.

To replace old SDC MCRW (not IMCRW) with MCRK a pedestal bracket should be used (supplied separately).

*The same pedestal bracket is used to replace old SDC MCRW with new IMCRW.*



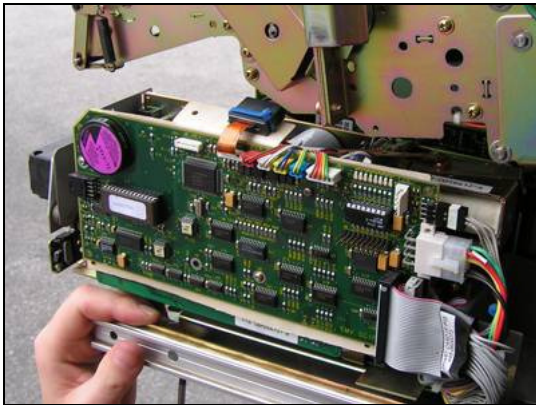
## 2 Replacing IMCRW with MCRK

If MCRK is being installed as a replacement for NCR IMCRW no additional hardware is required. MCRK is 100% mechanically compatible with NCR IMCRW:

- Remove old IMCRW from the ATM
- Install new MCRK in the same place
- Connect SDC cable (NOTE: not RS-232 cable) and power supply cable to MCRK. Free SDC cable is usually located near the card reader.
- Mount LFCC or Open Bin

## 3 NCR 5670/5870/5873/5874/5875 Installation

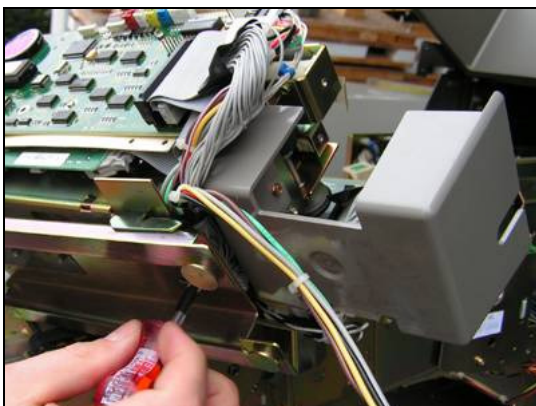
### 3.1 Removing old SDC MCRW



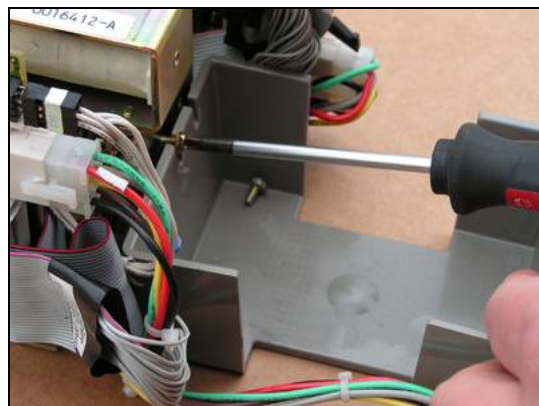
Remove two M4 fixing screws as shown on the picture



Disconnect Power Supply, SDC bus, CROPF power cable (if present) from MCRW

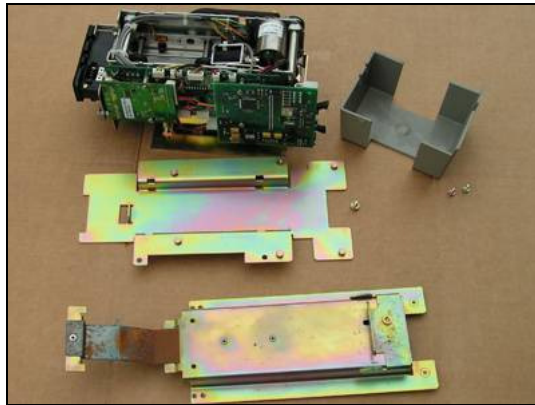


Separate the card reader from the mounting plate by unscrewing one M4 screw (located underneath).



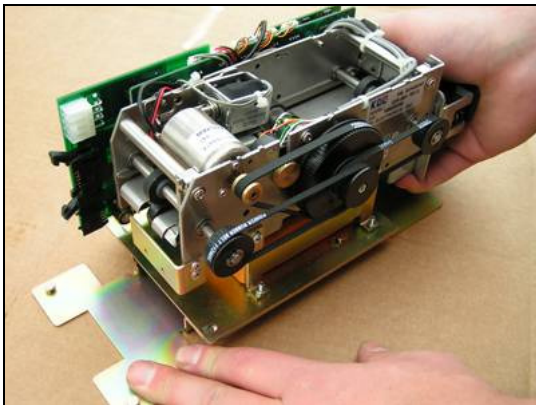
Remove Open Bin by unscrewing two M3 screws as shown on the picture

### 3.2 Installing MCRK

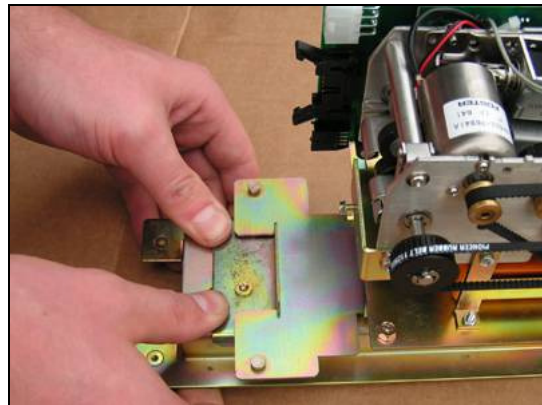


#### Checklist:

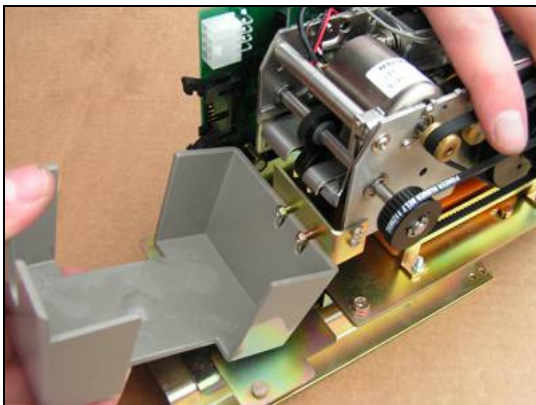
1. 1x MCRK card reader
2. 1x pedestal bracket (supplied separately)
3. 1x 5670/5870 MCRW mounting plate (taken from ATM)
4. 1x Open Bin (taken from ATM)
5. 2x M3 screws
6. 4x M4 screws



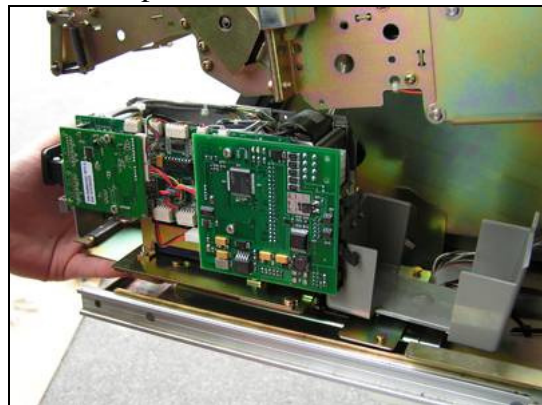
Fix MCRK on pedestal bracket using M4 screw.



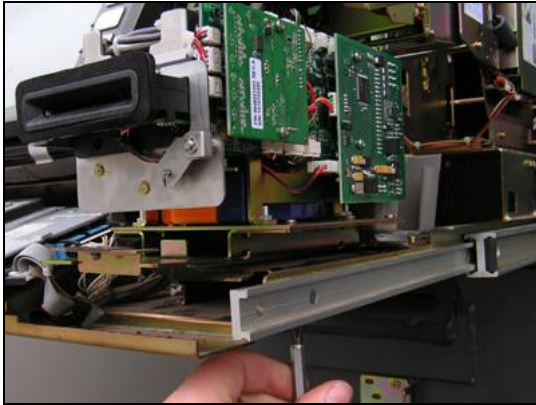
Mount MCRK + pedestal bracket to the card reader mounting plate and fix it using stop bracket and M4 screw



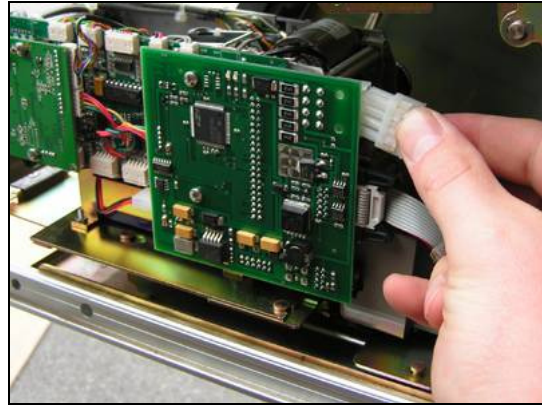
Attach Open Capture Bin to the reader and fit it using two M3 screws



Mount the reader to its place in the ATM



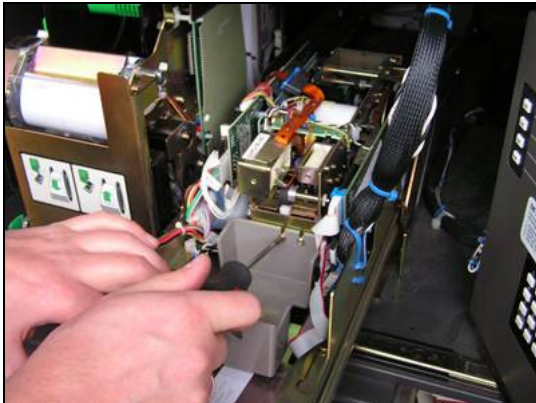
Fix it there using two M4 screws; adjust Card Reader position as necessary



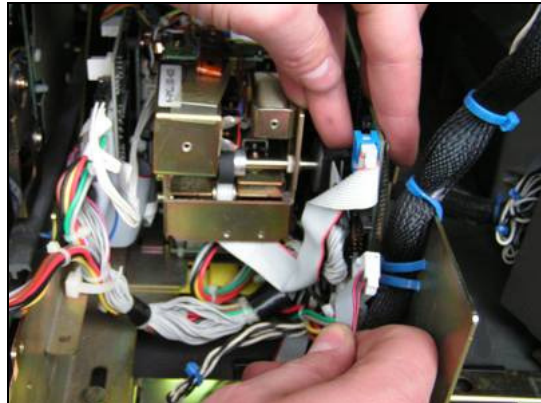
Connect Power Supply and SDC cables.

**MCRK is installed**

#### 4 NCR 568x/588x Installation

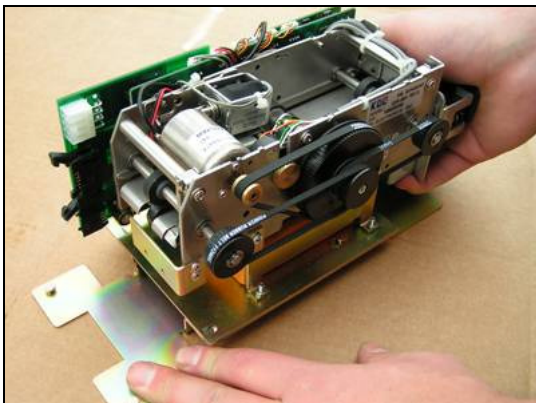


Remove two M3 Open Bin fixing screws

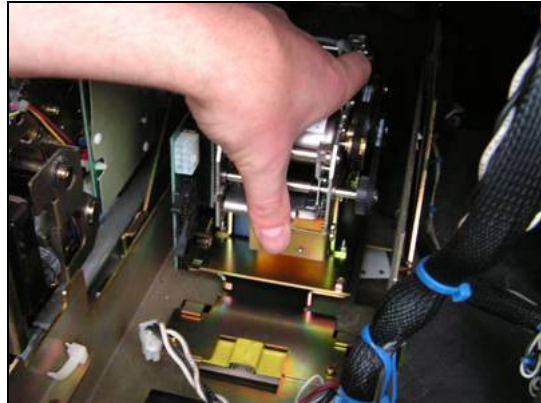


Disconnect Power Supply, SDC bus, CROPF power cable (if present) from MCRW.

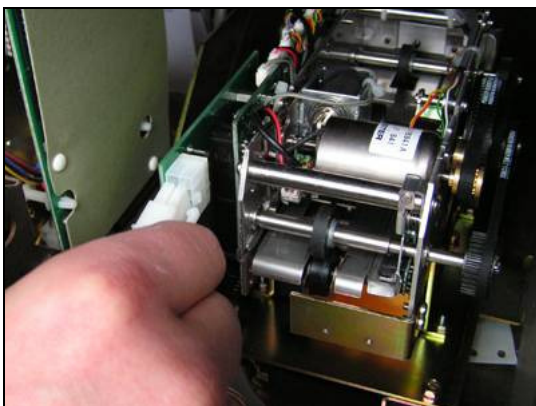
Completely remove MCRW from the ATM



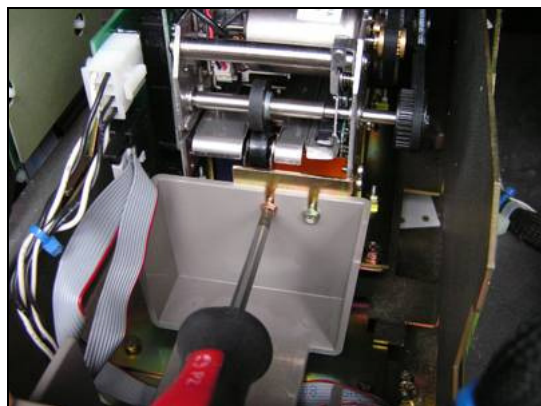
Fix MCRK on pedestal bracket using M4 screw.



Put MCRK into its place in the ATM.



Connect Power Supply and SDC cables to the MCRK



Attach Open Bin to the MCRK using two M3 screws.

**MCRK is installed**